

## Spirit-Class Meeting Facility Planner

Lounge Name	Deck # guests/set-up	Maximum	Lounge Size/Layout & Equipment	   
• <b>MAIN LOUNGE</b>	Main Floor (Promenade Deck)	1167 Fixed Theater	<b>17,674 sq. ft.</b> - Audio playback cassette, CD and mini-disc, built-in camera for videotaping events (VHS non-edited); larger-format front-video projection, full stage fill, full lighting show, wireless capabilities for four microphones, infrared listening system in the entire balcony area. Orchestra can be set up in the pit or towards the back of the stage.	✓
	Upper Floor (Atlantic Deck)	500 Reception		✓
	Balcony (Main Deck)	300 Modified Classroom		✓
• <b>CABARET LOUNGE</b>	Riviera Deck (Aft)	348 Fixed Theater 300 Reception 200 Modified Classroom	<b>6,674 sq. ft.</b> - 15' x 33' dance floor; basic stage lighting with some automated lighting and color-changing capabilities. Front video projection, built-in projector with serial input for PowerPoint presentations on 10' built-in screen; wireless microphones available; audio-playback cassette, CD and mini disc; built-in camera for videotaping events.	✓ ✓ ✓ ✓
• <b>JAZZ CLUB</b>	Promenade Deck (Mid-ship)	90 Fixed Theater 135 Reception 40 Modified Classroom	<b>2,659 sq. ft.</b> - TV capabilities, 8' projector screen, CD and cassette audio playback, wired microphones, portable projector, lighting show.	✓ ✓ ✓ ✓
• <b>DANCE CLUB</b>	Riviera & Promenade Deck (Mid-ship)	25 Fixed Theater 118 Reception 15 Modified Classroom	<b>3,767 sq. ft.</b> - Interior TV monitors on wall, one wired microphone; CD, cassette and vinyl playback; video disc and VHS video; playback on video walls. Broadcast TV available. Limited specialty lighting.	✓ ✓ ✓ ✓
• <b>PIANO BAR</b>	Atlantic Deck (Forward)	30 Fixed Theater 106 Reception 20 Modified Classroom	<b>1,722 sq. ft.</b> - Basic audio package with one wireless microphone, cassette and CD players.	✓ ✓ ✓ ✓
• <b>WEDDING CHAPEL</b>	Atlantic Deck (Forward)	41 Fixed Theater	<b>721 sq. ft.</b> - Basic audio package with three wireless lapel microphones, cassette and CD players.	✓ ✓
• <b>CARD ROOM</b>	Promenade Deck (Forward)	15 Fixed Theater 20 Reception 12 Modified Classroom 8 Boardroom	<b>377 sq. ft.</b> - Basic audio package with one hard-wired microphone. VHS/PowerPoint built-in projector; cassette and CD players.	✓ ✓ ✓ ✓
• <b>CONFERENCE CENTER</b>	Atlantic Deck (Aft)	60 Theater 60 Reception 35 Modified Classroom 15 Boardroom	<b>1,076 sq. ft.</b> - Can be divided into 2 smaller rooms. Full audio package for the two rooms and can be assigned so that one room is the master for both. Video (VHS/DVD) and PowerPoint presentation-ready. Each room with built-in projector and 8' screen.	✓ ✓
• <b>SPORTS BAR</b>	Promenade Deck (Forward)	20 Fixed Theater 67 Reception 12 Modified Classroom	<b>1,300 sq. ft.</b> - CD and cassette playback, multi-system VHS playback, speakers on each side. Broadcast TV available. A 42' plasma flat-screen TV and DVD playback.	✓ ✓ ✓ ✓
• <b>LIBRARY</b>	Promenade Deck (Mid-ship)	15 Theater 8 Boardroom	<b>640 sq. ft.</b> - Basic audio package with one hard-wired microphone. VHS/PowerPoint built-in projector, cassette and CD player.	✓

### NON-PRIVATE ROOMS

• <b>INTERNET CAFÉ</b>	Atlantic Deck (Forward)	23 Modified Classroom	<b>600 sq. ft.</b> - There are twelve computers with Internet access.	✓
• <b>LIDO DECK</b>	Lido Mid-ship (Poolside)	600 Reception	CD and cassette playback, wired microphones. Specialty stage lighting. (Not available on CARNIVAL SPIRIT.) Stage dimensions: 13' x 25', 22' x 9'.	✓ ✓ ✓ ✓
• <b>DINING ROOM*</b>	Promenade Deck Atlantic Deck	508 Dining 718 Dining	CD and cassette playback, wired microphones. (Not available on CARNIVAL PRIDE.)	✓ ✓ ✓ ✓
• <b>SUPPER CLUB</b>	Sun Deck (Mid-ship)	156 Reception**	<b>4,160 sq. ft.</b> - Stage and dance floor for nightly entertainment.	✓ ✓ ✓ ✓
• <b>DINING ROOM ANNEX</b>	Promenade Deck (Aft)	84 Reception	<b>1,184 sq. ft.</b> - CD and cassette. Has door that closes off from the main dining room.	✓ ✓ ✓ ✓

\* Private only if filled.

\*\*Additional charge for lunchtime function.

All meeting facilities, including required equipment, must be requested as soon as possible and no later than two weeks prior to sailing.

## Spirit-Class Onboard Audio-Visual Equipment

Ship	Rear Screen	Fixed Screen	Portable Screen (Size)	VCR/ VHS	Overhead Projector	Slide Projector	LCD Projector	Video Projector	TV Monitor	Internet Café
<b>CARNIVAL PRIDE®</b>	Yes (Rent Equipment)	8' x 8' 32' x 16'	6' x 6'	Yes	Yes	Yes	Yes	Yes	32"	Yes
<b>CARNIVAL SPIRIT<sup>SM</sup></b>	Yes (Rent Equipment)	8' x 8' 10' x 10' 20' x 40'	8' x 8' 6' x 6'	Yes	Yes	Yes	No	Yes	27"	Yes
<b>CARNIVAL LEGEND<sup>SM</sup></b>	Yes (Rent Equipment)	30' x 20' (1) 8' x 8' (3) 6' x 6'	6' x 6'	Yes	No	Yes	Yes	Yes	27"	Yes
<b>CARNIVAL MIRACLE®</b>	Yes (Rent Equipment)	30' x 20' (1) 8' x 8' (3) 6' x 6'	6' x 6'	Yes	No	Yes	Yes	Yes	27"	Yes

At any one moment there are a million reasons to be glad you chose Carnival.

### Your group will love meeting on a ship.

Our staff can provide you with a variety of space and equipment options you need for your meeting. We can accommodate your entire group with a conference area or arrange for smaller breakout rooms. You can even take advantage of a multi-tiered showroom for special events such as an awards ceremony. In addition, no one has to be out of touch with home or office thanks to our phone system and Internet Café. Many of our ships also provide wireless computer service.

### They'll have lots of places to play.

Every ship offers a choice of pools, whirlpools and a serpentine water slide. Spa Carnival boasts a state-of-the-art fitness center plus a complete European-style salon. Carnival's Total Choice Dining<sup>SM</sup> offers a wide range of fine and casual settings including a 24-hour Pizzeria. In addition, stellar entertainment is in every bar and lounge as well as in the main showroom and late-night cabaret.

### And everyone gets VIP treatment.

Our professional, experienced staff is available to respond to your guests' every request. Just let us know if you need anything at all, from providing Bon Voyage gifts, arranging a private cocktail reception, setting up a golf tournament, or planning other customized shore events.

**To plan your next meeting call any travel agent, meeting planning company, or Carnival Cruise Lines at 1-877-278-0388. Or visit us at [carnivalmeetings.com](http://carnivalmeetings.com).**



spirit036

Library and Internet



spirit033

Jazz Club



spirit017

Sports Bar



spirit016

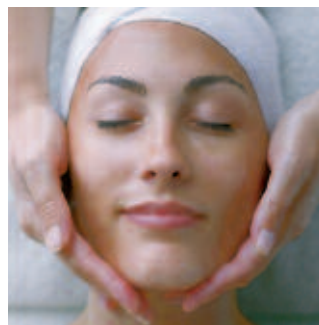
Wedding Chapel



new SPIRIT cover.tif

# SPIRIT CLASS

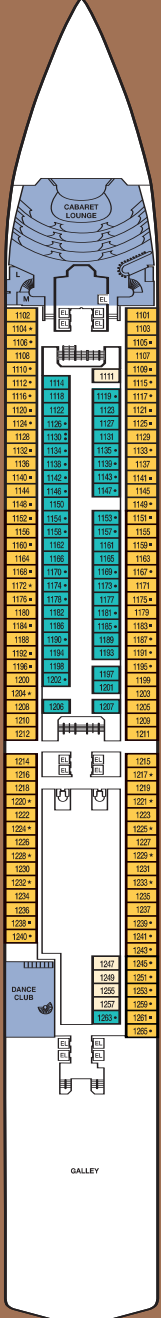
Meeting Facility Planner at a glance



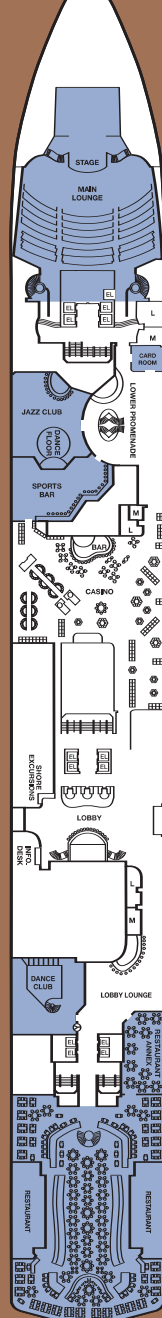
## Why a Spirit-class ship may be the best choice for your program.

While every floating resort in the “Fun Ship®” fleet may accommodate your program at sea, there are special advantages to meeting aboard a Spirit-class ship. For starters, the majority of staterooms offer ocean views, most of which have private balconies. Each ship is distinguished by a two-level promenade with a wide choice of clubs, lounges and showrooms, as well as dedicated meeting space. In addition, the superb dining can be savored in the two-level main dining room, the

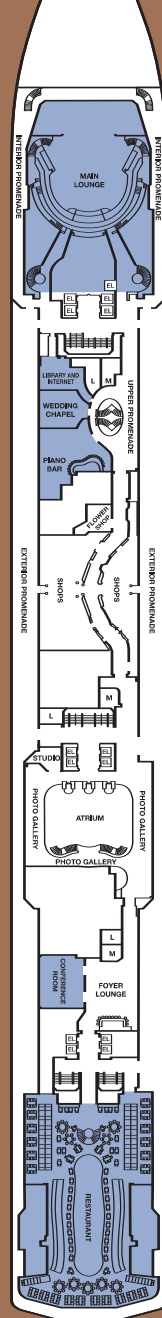
Lido Deck restaurant or the reservations-only supper club high above the atrium. Naturally, your guests will enjoy lavish entertainment, pampering service and such Carnival exclusives as our Corporate University team-building programs and a golf program led by PGA professionals. This guide will give you an idea of the geography of this class of ship and the size of not only meeting areas, but also such popular leisure-time facilities as the friendly casino and Spa Carnival®.



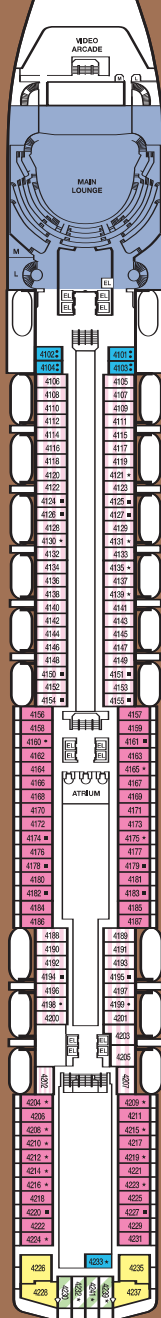
Riviera/Deck I



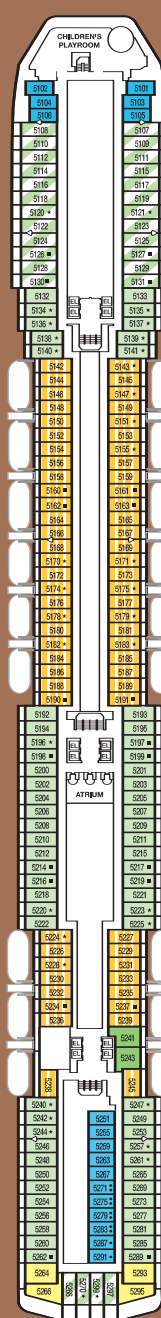
Promenade/Deck 2



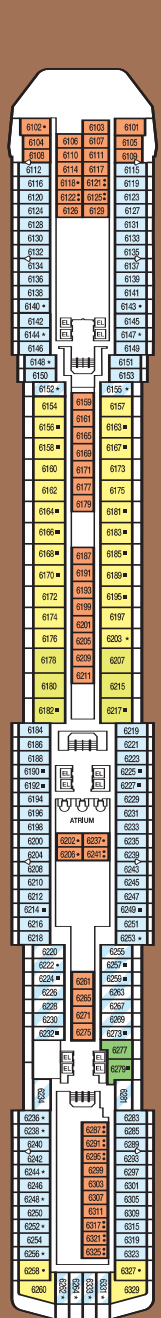
Atlantic/Deck 3



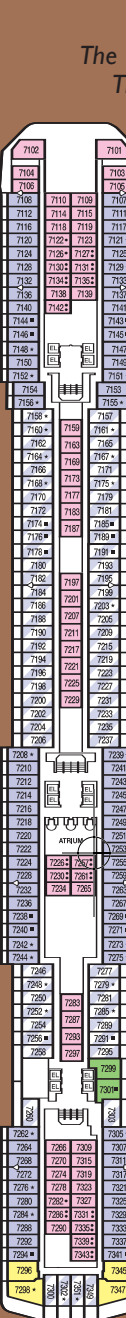
Main/Deck 4



Upper/Deck 5



Empress/Deck 6



Verandah/Deck 7

Category	Quantity	Dimensions
I2	6	14' x 23'/Balcony 14' x 5' - 330 sq. ft.
I1	44	10' x 22' - 220 sq. ft./Balcony 10' x 3'
9A	8	Various layouts
8A 8B 8D 8F 8H	558	10' x 18' - 185 sq. ft.
8C 8E 8G 8I		10' x 18' - 185 sq. ft.
7A	66	10' x 18' - 185 sq. ft.
6A	99	10' x 18' - 185 sq. ft.
5A	68	10' x 18' - 185 sq. ft.
4A 4B 4C 4D 4E	208	10' x 18' - 185 sq. ft.
IA	5	10' x 18' - 185 sq. ft.
MEETING FACILITIES		

Verandah balcony, interactive 18" TV, VCR, refrigerator; bar area, hair dryer; bathrobes, amenity baskets, safe, phone

Verandah balcony, interactive 18" TV, VCR, refrigerator; bar area, hair dryer; bathrobes, amenity baskets, safe, phone

Verandah balcony, interactive 18" TV, VCR, refrigerator; bar area, hair dryer; bathrobes, amenity baskets, safe, phone

Standard balcony, interactive 18" TV, VCR, refrigerator; bar area, hair dryer; bathrobes, amenity baskets, safe, phone

Extended balcony, interactive 18" TV, VCR, refrigerator; bar area, hair dryer; bathrobes, amenity baskets, safe, phone

Obstructed balcony, interactive 18" TV, VCR, refrigerator; bar area, hair dryer; bathrobes, amenity baskets, safe, phone

Ocean view, interactive 18" TV, VCR, refrigerator; bar area, hair dryer; bathrobes, amenity baskets, safe, phone

French doors/obstructed view, interactive 18" TV, VCR, refrigerator; bar area, hair dryer; amenity baskets, safe, phone

Interior, interactive 18" TV, VCR, refrigerator; bar area, hair dryer; amenity baskets, safe, phone

Interior with upper and lower beds, interactive 18" TV, VCR, refrigerator; bar area, hair dryer; amenity baskets, safe, phone

